



**Auburn  
Recreation  
Department**

**AUBURN RECREATION PRESENTS...**



# **SPRING and SUMMER**

**2025 PROGRAMS & EVENTS**



**48 PETTENGILL PARK ROAD  
WEEKDAYS 8 AM - 4:30 PM  
[WWW.AUBURNMAINE.GOV](http://WWW.AUBURNMAINE.GOV)  
207.333.6611**



**Offices located at Hasty Community Center,  
48 Pettengill Park Road**

Dawna LaBonte, Director of Recreation  
dlabonte@auburnmaine.gov, 207-333-6601 X2105

Jen Banker, Executive Assistant  
jbanker@auburnmaine.gov, 207-333-6601 X2116

Heath Crocker, Recreation Coordinator, Adult Programs  
hcrocker@auburnmaine.gov, 207-333-6601 X2106

Sara Parker, Recreation Coordinator, Youth Programs  
sparker@auburnmaine.gov, 207-333-6601 X2102

Zach Boyd, Recreation Specialist, Youth Sports  
zboyd@auburnmaine.gov, 207-333-6601 X2110

**Offices located at Auburn Senior Community Center,  
48 Pettengill Park Road**

Jenna Payne, Recreation Specialist, Age Friendly  
jpayne@auburnmaine.gov, 207-333-6601 X2108

Jody Collins, Recreation Specialist, 50+ Senior Trips  
jcollins@auburnmaine.gov, 207-333-6601 X2109

**Offices located at Auburn PAL Center,  
48 Pettengill Park Road- Moving in July!**

Shawn Boyd, Recreation Specialist, PAL Center  
sboyd@auburnmaine.gov, 207-333-6601 X2041

Kayla Castonguay, Mentor Program Coordinator, PAL Center  
kcastonguay@auburnmaine.gov, 207-333-6601 X2041

**At Auburn Recreation, our mission is to promote a healthy lifestyle through various recreational activities focused on enhancing the wellbeing of all Auburn citizens.**

**Registration:** Registration can occur online at [www.auburnmaine.gov](http://www.auburnmaine.gov)

**Registration Process:** Pre-registration and pre-payment are required for all classes. Program registrations are accepted in person, by mail, online, or over the phone. Payment is expected before the start of the first class date. Individuals may register their own family and one other family for programs unless we have specified otherwise.

**Payment:** Full payment is required at the time of registration for classes \$40 and under. For programs \$41 - \$100, a minimum of 50% payment at the time of registration is required along with a signed payment plan. For programs \$101 or more there is a minimum \$50 payment at the time of registration required along with a signed payment plan.

**Payment Plan Policy:** Payment Plans are available for programs \$40 or more. These are 90-day payment plans and can only be set up in person, in the office. When an account with an outstanding balance doesn't show any payment past 90 days, it will be sent to collections. If you are on a payment plan and stop/miss a payment without communicating with us, we may deny or remove the participant from the activity. If you are on a payment plan and would like to register for a new program, your balance must be under \$200 before registration and a new payment plan can occur.

**Non-Residents:** Participants who do not live in Auburn must pay an additional fee of \$10 per class. This includes senior citizens and non-residents unless otherwise specified.

**Confirmations:** We do not send course confirmations or reminders of enrollment. If you register for a program and do not receive a call from us, you have been accepted into the class and are responsible for knowing class dates, times, and locations.

**Refunds:** If we cancel a class or special event, all fees will be refunded. If you withdraw 3 business days before the first class or one-time event (excluding weekends and holidays), you will receive a full refund. If you withdraw fewer than 3 business days before the first class or one-time event, you will receive a 50% refund. No refunds will be given if you cancel after the class, or if the one-time event has taken place. If you are dissatisfied with a program after the first class of a session, you must let us know before the second class of the session. We will issue a 50% refund at this time. No refunds will be given after the second class of a session. Refunds take about 14-21 days to process. We do not provide cash refunds. If an injury occurs to a participant that prevents the participant from continuing in a class, you may request a pro-rated refund of the activity fee.

**Trip Refund:** If Auburn Recreation cancels a trip, we will refund all fees to the participant. If the participant notifies us 3 or more business days before the scheduled trip, we will issue a full refund unless otherwise noted in the brochure. If the participant notifies us fewer than 3 business days before the scheduled trip, we will issue a 50% refund. No refunds will be given on the day of the trip or after the trip is held.

**Inclusion:** Auburn Recreation provides reasonable accommodations to qualified individuals with disabilities. To accommodate your needs, a request must be made at least 10 days prior to the first day of the program.

**Diversity and Equity:** Auburn Recreation is committed to fostering, cultivating, and preserving a culture of diversity, equity, and inclusion. We embrace and encourage our employees and participants' differences in age, color, disability, ethnicity, family or marital status, gender identity or expression, language, national origin, physical and mental ability, race, religion, sexual orientation, veteran status, and other characteristics that make our employees and participants unique.

**Discounts:** Auburn Recreation does NOT offer a senior discount, sibling discount, or family discount for classes as we attempt to make the classes as low and affordable as possible.

POPLACES

## TRACK & FIELD

### Summer Track

Practices will be held at Edward Little High School twice a week. Meets are on Thursdays (time and location schedule TBA).

Every athlete is required to have their own USATF membership - this is NOT included in their registration.

**AGES:** 6 - 14 years old  
**MEETS:** Thursdays (Dates & Locations TBA)  
**PRACTICES:** Monday & Wednesdays Time TBA  
**LOCATION:** Edward Little High School Track  
**DATES:** Starting June 9th!  
**FEE:** \$60 residents | \$70 non-resident  
**CONTACT:** zboyd@auburnmaine.gov

## LITTLE EDDIES

### Little Eddies Fiddlesticks

This class is for young athletes that are brand new to Lacrosse! The 1-hour clinic will be based on lacrosse skills and drills (they will not be on teams). During this 4-week clinic, we'll work on holding the stick, scooping the ball, tossing and catching the ball and shooting the ball. Our instructors rely on parent help to make sure the hour runs smoothly so be prepared to play alongside your little one!

**AGES:** K - 2nd Grade  
**LOCATION:** Ingersoll Turf Facility  
**DATES:** Sundays  
**TIMES:** 9 - 10 AM  
**FEE:** \$50  
**CONTACT:** zboyd@auburnmaine.gov

### Little Eddies Volleyball

Join us for the first time as we introduce Volleyball to Auburn Recreation! With the help of ELHS Coach Christy Keep, we will have a **CO-ED** weekly skills and drills clinic as we try and raise the popularity of volleyball in our community!

**AGES:** 5th - 6th & 7th - 8th  
**LOCATION:** AMS Gym OR ELHS Aux Gym  
**DATES:** March 19th - May 14th | Wednesdays  
**TIMES:** 5th/6th 4:30-6:00 PM | 7th/8th 6:30-8:00 PM  
**FEE:** \$40  
**CONTACT:** zboyd@auburnmaine.gov

## LACROSSE

### Girls Lacrosse

We are offering both 5th-6th and Middle School girl teams this season. Have a 3rd & 4th grader interested? Reach out! Schedules for both games and practices will be sent to participants in April!

**GRADES:** 5th - 6th & 7th - 8th  
**PRACTICES:** 2-3 weekdays at Walton Field  
**GAMES:** SAT or SUN @ Walton Field or local town  
**FEE:** \$80 residents | \$90 non-residents  
**CONTACT:** zboyd@auburnmaine.gov

### Boys Lacrosse

This program will include a regular practice schedule and a full game schedule starting in late April and ending in June. Each player will sign out a reversible game jersey that will be returned at the end of the year. Participants must provide all other necessary equipment. Schedules for both games and practices will be sent to participants in April!

**GRADES:** 3rd - 4th, 5th - 6th, & 7th - 8th  
**PRACTICES:** 2-3 weekdays at Walton Field  
**GAMES:** weekends at Walton Field or local town  
**FEE:** \$80 residents | \$90 non-residents  
**CONTACT:** zboyd@auburnmaine.gov

## CHEER CAMP

Join us in June for a two-week cheer clinic! During this program, we will go over stunting and tumbling basics. We will also learn a mini-routine to be performed for family and friends on the last day of practice! Registration includes a t-shirt and bow - cheer shoes (low/no-tread sneakers) are not provided.

**GRADES:** K-4th & 5th-8th  
**DATES:** 6/9-6/20 | Mondays, Wednesdays, & Fridays  
**TIMES:** K-4th 4:30-5:30PM | 5th-8th 5:45-6:45PM  
**LOCATION:** Hasty Community Center Gym  
**FEE:** \$35 residents | \$45 non-residents  
**CONTACT:** egallant@auburnmaine.gov

**CHECK OUT OUR FACEBOOK PAGE FOR POP-UP PROGRAMS!**

## CAMPS

### Vacation Camp

Bring the kids to camp during a week of school vacation! Located at the Hasty Community Center, kids will participate in organized activities ranging from individual and group sports to arts and crafts.

Lunches and snacks are NOT provided.

Registration is OPEN! Sign up today!

**GRADES:** K - 6th  
**LOCATION:** Hasty Community Center  
**HOURS:** 7:30 AM - 5:30 PM  
**VACATIONS:** April 21st - 25th (no camp Monday)  
**FEE:** \$150 residents | \$175 non-residents  
**CONTACT:** sparker@auburnmaine.gov



### Summer Day Camp

Join in on the fun at Auburn Recreation's Summer Day Camp! Our program is an 8-week day camp that provides free breakfast and lunch, field trips, active games, arts & crafts, and more for kids during summer break.

Financial aid is available in the office or on our website! Auburn Residents ONLY.

Payment plans are available upon request, don't forget to click the drop-down menu to see check-out options, including our \$100 off pay-in-full discount.

**GRADES:** K - 8th (ENTERING in the Fall of 2025)  
**LOCATION:** Walton School  
**HOURS:** 7:30 AM - 5:30 PM  
**DATES:** June 23rd - August 15th, 2024  
**FEE:** \$900 residents | \$1,000 non-residents  
**CONTACT:** sparker@auburnmaine.gov

## BEFORE & AFTER CARE

### Auburn Adventures Childcare

Auburn Adventures is available for grades K through 6th at Hasty Community Center! Our veteran staff provide transportation to and from school for participants. Registration for the 2025-2026 school year will open in July!

**GRADES:** K - 6th  
**LOCATION:** Hasty Community Center  
**MORNINGS:** 7:00 - 8:00 AM  
**AFTERNOONS:** 3:00 - 5:30 PM (1:00 start on half days)  
**FEE:** \$300 per month  
**CONTACT:** sparker@auburnmaine.gov

## PAL CENTER



We are super excited to announce that we will be opening this Fall- there will be some changes to our programming schedule so be on the look out for that! Please be patience with us while we move into our new space! Until then we are still at the Hasty Memorial Community Center (48 Pettengill Park Road)!

**HOURS:** 2 PM - 6 PM (Summer Hours 12-4PM)  
**DAYS:** Monday - Friday  
**CONTACT:** sboyd@auburnmaine.gov

# YOUTH PROGRAMS

FAMILY EVENTS

# AUBURN PAL EGG HUNT & BBQ

APRIL 2025 - 5:00 PM



FREE! | EGG HUNT | BASKET GIVEAWAYS

A decorative floral illustration on the left side of the section, featuring yellow daisies, white daisies, and small yellow flowers on green stems with leaves.

## spring celebration

Goodie jars (while supplies last), chalk art, story time and crafts with Auburn Public Library, fun activities with the Home at Last team from Maine Real Estate Co., and, of course, pictures with Mr. Bunny!

**Saturday, April 19th**

10-12 | FREE! | Hasty Community Center

 AUBURN RECREATION AND THE EXCHANGE CLUB OF AUBURN PRESENT THE ANNUAL



youth fishing

# DERBY

**SATURDAY, MAY 17TH**  
PETTENGILL PARK POND  
ONLINE REGISTRATION REQUIRED



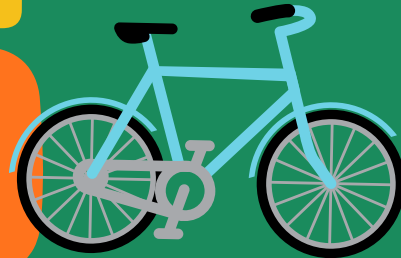
**THE AUBURN PAL & PD**

**MAY 2025**

**5:00 PM**

**VALERIE  
CIRCLE**

# **BIKE RODEO**



# **COMING SOON!**

## **2025 DISCOUNT TICKET PROGRAM**



STAY TUNED FOR PRICES AND TICKET PICK-UP DATES!



**FAMILY  
EVENTS**

# **MOVIES IN THE PARK!**

**JULY 3RD GHOSTBUSTERS - ANNIVERSARY PARK**

**JULY 17TH SING - FESTIVAL PLAZA**

**JULY 31ST IF - LAKE GROVE PARK**

**AUGUST 14TH LITTLE GIANTS - WALTON FIELD**

# 50+ PROGRAMS



Auburn's Senior Community Center offers a wide variety of activities for adults 50 years or older! The monthly trips include mystery lunches, hikes, plays, and performances. On-site programs include; Artist's workshops, group painting classes, cooking or card-making classes, or just visit with friends, play games, and socialize during our Friday morning drop-in!

Stop by the Auburn Senior Center on Monday, Wednesday and Friday morning to pick up a paper copy of our monthly calendar, where you'll find ALL of our trips and in-house programs!

## UPCOMING TRIPS

### Cabbage Island Clambake

Your journey to Cabbage Island starts at Boothbay Harbor's Pier 6, where you'll board the Bennie Alice for a scenic, narrated cruise along Maine's coast. Upon arrival, enjoy a traditional New England clambake featuring chowder, lobster, steamers, potatoes, corn, and blueberry cake. For non-lobster eaters, roasted half chickens are available. Coffee, tea, iced tea, and water are included, with a full cash bar on-site.

We'll depart from the Auburn Senior Community Center at 10:00 am on a 56-passenger motorcoach (courtesy of The Fortin / Pinette Group). Payment is due at booking, and pre-registration is required. Maximum capacity is 56.

Registration opens June 1st!

**DATE:** Friday, August 22nd (rain or shine)  
**TIME:** 10:00 AM departure, 6:30 PM return  
**FEE:** \$115 resident | \$125 non-resident  
**CONTACT:** jcollins@auburnmaine.gov

**PRE-REGISTRATION FOR THIS PROGRAM IS REQUIRED!**

## IN-HOUSE PROGRAMS

### Card Crafting

Join us at ASCC for a monthly card crafting program! All materials will be provided. Check our monthly calendar for specific themes.

**DATE:** 3rd Friday of each month  
**TIME:** 10:00 - 11:30 AM  
**LOCATION:** Auburn Senior Community Center  
**FEE:** FREE  
**CONTACT:** jpayne@auburnmaine.gov

**PRE-REGISTRATION FOR THIS PROGRAM IS REQUIRED!**

### Sunshine Club

Each month, the Sunshine Club comes together to make beautiful floral arrangements to be delivered to local long-term care facilities. We are always welcoming new members to this lively group!

**DATE:** 2nd Friday of each month  
**TIME:** 10:00 - 11:30 AM  
**LOCATION:** Auburn Senior Community Center  
**FEE:** FREE  
**CONTACT:** jpayne@auburnmaine.gov

**PRE-REGISTRATION FOR THIS PROGRAM IS REQUIRED!**

**CHECK OUT OUR MONTHLY CALENDAR FOR MORE PROGRAMS!**



## SOFTBALL

### Slow Pitch Softball Leagues

Our Adult Softball Leagues start in May and finish late August. Registrations open March 1st!

**MENS COMPETITIVE:** \$875 | Wednesdays  
**MEN'S REC UPPER:** \$875 | Tuesdays  
**MEN'S REC LOWER:** \$875 | Mondays  
**CONTACT:** hcrocker@auburnmaine.gov

**COED UPPER/LOWER:** \$700 | Sundays  
**CONTACT:** zboyd@auburnmaine.gov

### MLS Wood Bat Draft League

Adult Wood Bat Draft League starts in September with a draft held in July. Registration opens June 13th!

**PLAYER FEE:** \$50 | Tuesday/Thursday  
**CONTACT:** hcrocker@auburnmaine.gov

## INDOOR PICKLEBALL



Pickleball has grown fast, and we can hardly keep up! This indoor (switches to only outdoor play during the summer months), drop-in style program allows adults of all ages and abilities. We're always welcoming new players, come check it out!

**DAYS:** Tuesdays & Thursdays  
**TIMES:** 8:00 AM - Noon  
**LOCATION:** Hasty Community Center  
**FEE:** \$2 resident | \$3 non-resident  
**PUNCH PASS:** \$20 resident | \$30 non-resident  
**CONTACT:** hcrocker@auburnmaine.gov

## COED SOCCER



Get a team together for our Co-Ed Adult Soccer League! This program is best suited for those looking for something less serious and more fun. This is a full field 7v7 league, must have at least 3 females playing. Males must be 28 years old and females be at least 18 years old, ID's will be required.

### Session 4

**DATES:** March | Thursdays  
**TIMES:** 8:00 PM, 9:00 PM & 10:00 PM  
**LOCATION:** Ingersoll Turf Facility  
**FEE:** \$825 per team  
**CONTACT:** hcrocker@auburnmaine.gov

## SPRING BASKETBALL LEAGUES

Registration for ALL of our Adult Basketball leagues open in March!

### Coed League (Slowdown)

**DATES:** Thursdays beginning in March  
**LOCATION:** Hasty Community Center  
**TIMES:** Game times vary | 6:00 PM - 10:00 PM  
**FEE:** \$650 per team  
**CONTACT:** hcrocker@auburnmaine.gov

## SUMMER BASKETBALL LEAGUES

### Men's A League

**DATES:** May | Sundays  
**LOCATION:** Hasty Community Center  
**TIMES:** Game times vary | 3:00 PM - 8:00 PM  
**AGES:** 18+  
**FEE:** \$900 per team  
**CONTACT:** hcrocker@auburnmaine.gov

### Men's B League (Slowdown)

**DATES:** May | Tuesdays  
**LOCATION:** Hasty Community Center  
**TIMES:** Game times vary | 6:00 PM - 9:00 PM  
**AGES:** 30+  
**FEE:** \$750 per team  
**CONTACT:** hcrocker@auburnmaine.gov

### Men's C League (Slowdown)

**DATES:** May | Thursdays  
**LOCATION:** Hasty Community Center  
**TIMES:** Game times vary | 6:00 PM - 9:00 PM  
**AGES:** 40+  
**FEE:** \$750 per team  
**CONTACT:** hcrocker@auburnmaine.gov

# ADULT SPORTS



# Auburn Youth Mentorship Program

**Auburn's "recreation-meets-mentoring" youth program introduces at-risk youth to meaningful life skills, enrichment, leisure, and recreation opportunities.**

With a focus on opioid intervention, the Auburn Youth Mentorship Program connects at-risk youth with positive, caring, committed mentors in a welcoming, safe location - the Auburn PAL Center.

Mentees feel empowered to make positive life choices and learn from trained mentors' experience, knowledge and encouragement. Supportive adult and community influences enable participants to set and reach personal and academic goals and prioritize health lifestyle choices.



## **MENTORS NEEDED!**

- \* Must be at least 18 years old
- \* Must be interested in working with at-risk youth
- \* Must be dependable with a positive attitude
- \* Must be able to complete background check & attend program training
- \* Must commit to spending 4-6 hours per month with a mentee for up to 1 year
- \* Attend quarterly meetings with staff

**Interested?** Contact Kayla Castonguay, PAL Mentorship Coordinator:  
kcastonguay@auburnmaine.gov | 207.333.6650 X2041 | [auburnpal.com](http://auburnpal.com).



The Auburn Exchange Club  
Bangor Savings | Benchwarmerz | Boston Brands | Brunswick Steel  
Cantrell's Seafood | Chapter 11 Furniture | Coastal Hood Cleaners  
Coastal Trading & Pawn | Convenient MD Urgent Care  
Darlings Brunswick Ford | Dubois Realty Group  
East Coast Home Improvements | Emerson Chevy | Gendron & Gendron  
Good Shepherd Food Bank Hannaford | Heat Pumps of Maine | Highly  
J&H Variety | Kids & Co. | L/A Arts | Lewiston Pawn Shop | Liquid Floors  
Maine Animal Health Alliance | Maine Real Estate Co.  
MJR Contracting & Roofing | Pats Pizza | Pediatric Associates of Lewiston  
Pine State Pest Services | Play It Again Auburn | Poland Spring | Prime 360  
Resilience Physical Therapy | Shaws | St. Hilaire Roofing Service  
The Fortin Group | Tim Dunham Realty | Wallace Trailer Parts

---

## Hasty Community Center

### Hasty Community Center Gymnasium

Monday-Friday, 8:00 AM - 4:30 PM | \$20 per hour  
After 5:00 PM & Weekends | \$35 per hour

### Hasty Rec Room

Monday-Friday, 8:00 AM - 4:30 PM | \$25 per hour  
After 5:00 PM & Weekends | \$35 per hour

### Hasty Birthday Special

Gym & Rec Room Combo | \$50 per hour

**Limited availability | Hasty rental questions?  
Contact Elizabeth at [egallant@auburnmaine.gov](mailto:egallant@auburnmaine.gov)**

## Auburn Senior Community Center

### Meeting Room

\$50 per hour (minimum of 2 hours) - 100 person capacity - \$25 per hour for non-profits

### Banquet Room

\$125 per hour - 200 person capacity - \$75 per hour for non-profits

### Full Hall

\$150 per hour - 300 person capacity - \$125 per hour for non-profits

### Add-Ons (in addition to room rental fee)

Sound System: \$50 | Kitchen Use: \$75 | Projector: \$50

**Limited availability | Senior Center rental questions?  
Contact Elizabeth at [egallant@auburnmaine.gov](mailto:egallant@auburnmaine.gov)**

## Ingersoll Turf Facility

Looking to rent the cages, half, or full field?

**Contact Robbie at [rberube@auburnmaine.gov](mailto:rberube@auburnmaine.gov)**

## Tot Lot

Full-Day Rental

\$150 - \$100 for non-profits

**SPONSORS & RENTALS**



**AUBURN RECREATION DEPARTMENT**

**48 PETTENGILL PARK ROAD**

**OPEN WEEKDAYS 8 AM - 4:30 PM**

**[WWW.AUBURNMAINE.GOV](http://WWW.AUBURNMAINE.GOV)**

**207.333.6601 X2112**