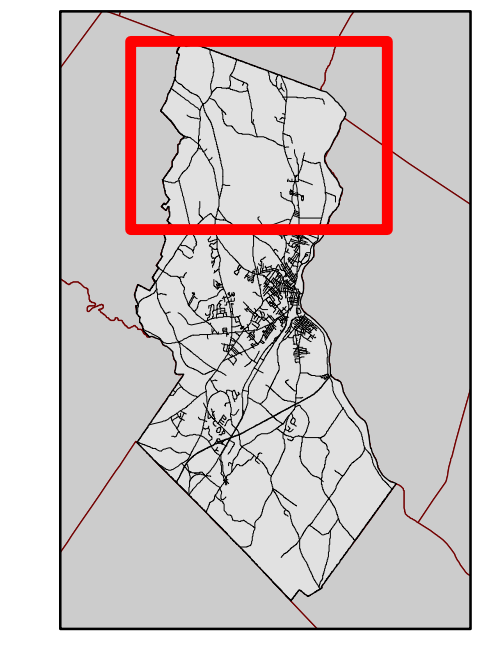
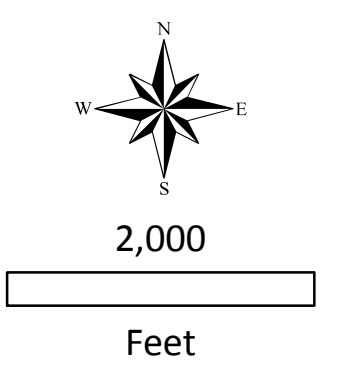


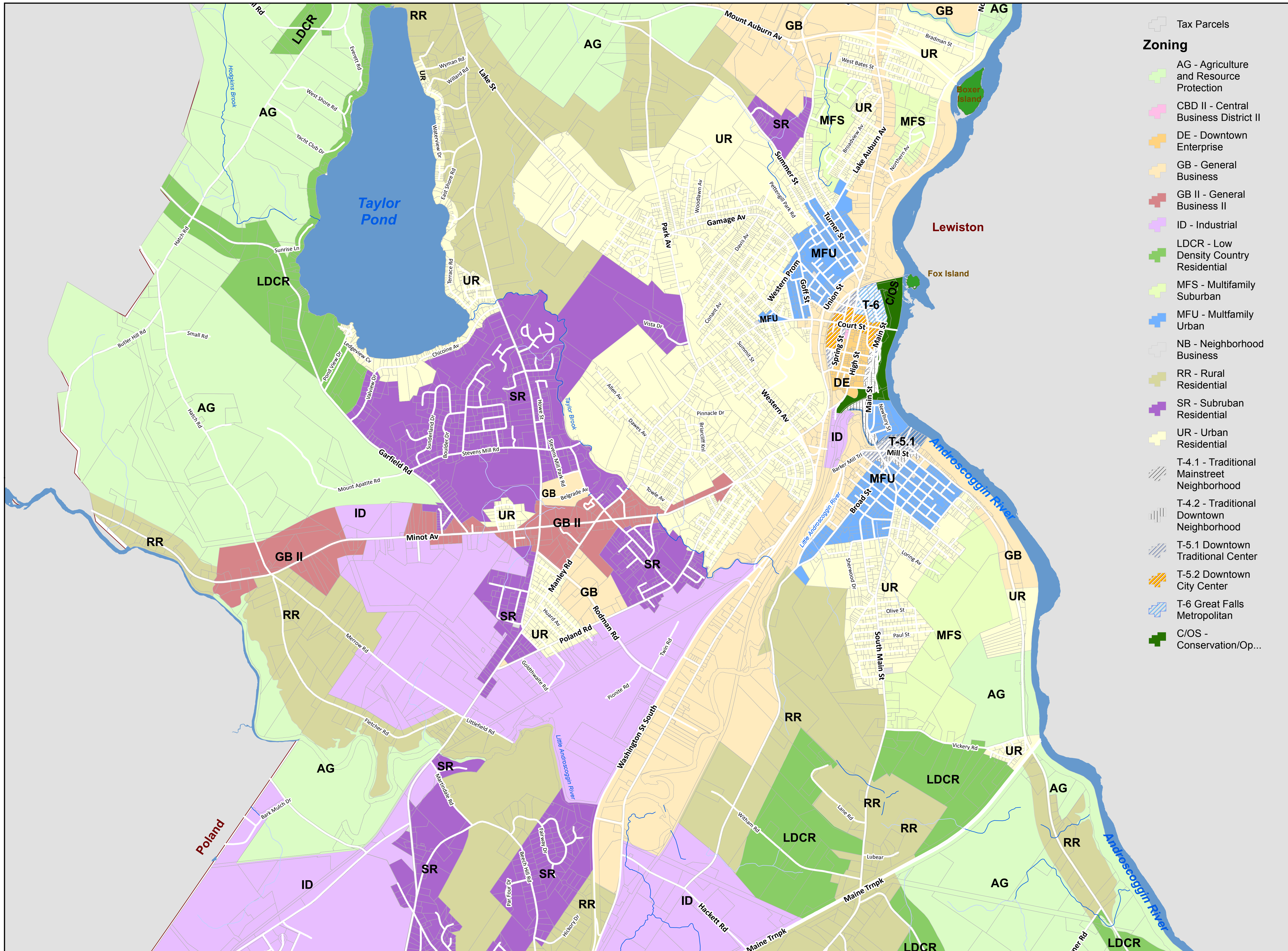
- Tax Parcels**
- Zoning**
- AG - Agriculture and Resource Protection
 - GB - General Business
 - LDCR - Low Density Country Residential
 - NB - Neighborhood Business
 - RR - Rural Residential
 - SR - Suburban Residential
 - UR - Urban Residential

**Zoning Map
City of Auburn
North Section**



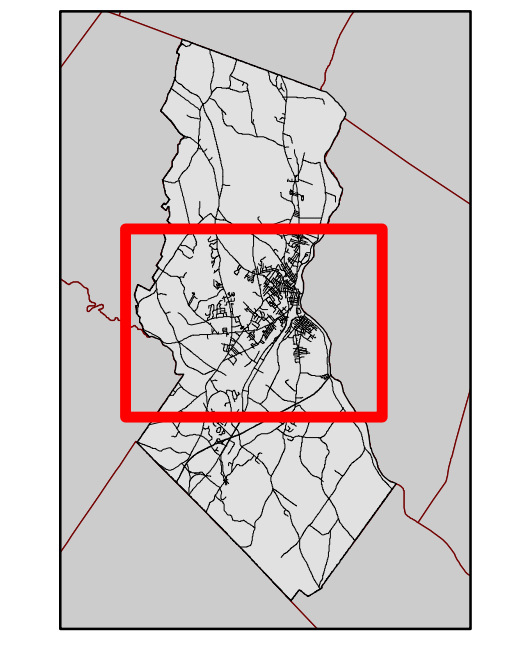
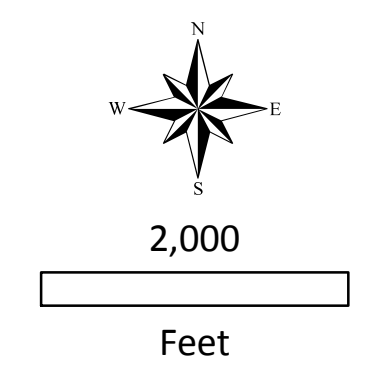
Notes:
Parcel Data provided by the City of Auburn.
Soils data from NRCS (<https://websoilsurvey.sc.egov.usda.gov>)

Map printed:
January 2018



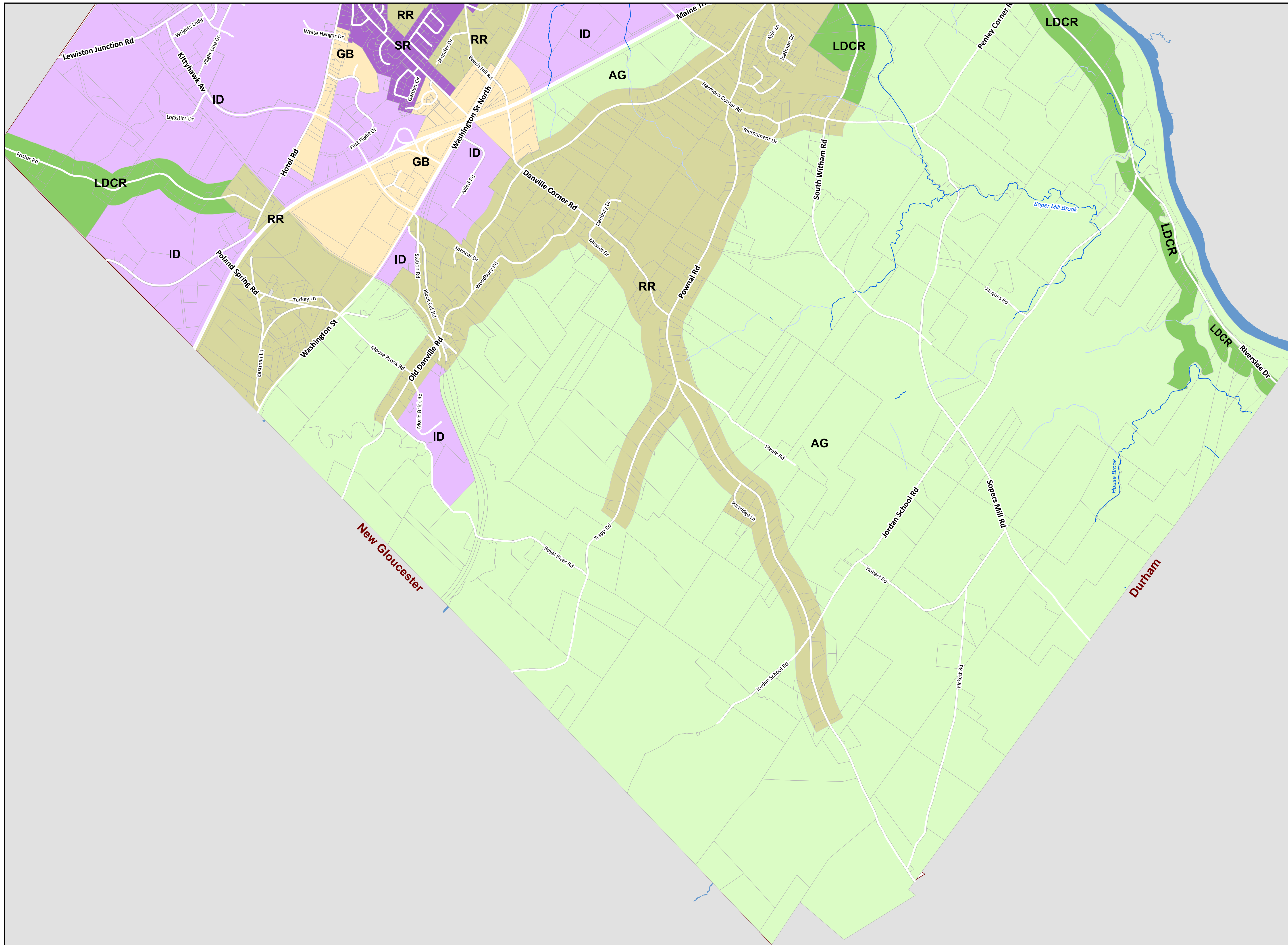
- Tax Parcels**
- Tax Parcels
- Zoning**
- AG - Agriculture and Resource Protection
 - CBD II - Central Business District II
 - DE - Downtown Enterprise
 - GB - General Business
 - GB II - General Business II
 - ID - Industrial
 - LDCR - Low Density Country Residential
 - MFS - Multifamily Suburban
 - MFU - Multifamily Urban
 - NB - Neighborhood Business
 - RR - Rural Residential
 - SR - Suburban Residential
 - UR - Urban Residential
 - T-4.1 - Traditional Mainstreet Neighborhood
 - T-4.2 - Traditional Downtown Neighborhood
 - T-5.1 - Downtown Traditional Center
 - T-5.2 - Downtown City Center
 - T-6 - Great Falls Metropolitan
 - C/OS - Conservation/Op...

Zoning Map City of Auburn North Section



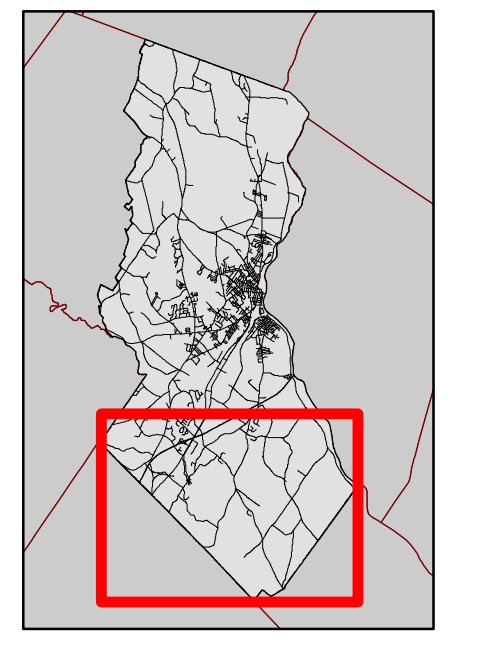
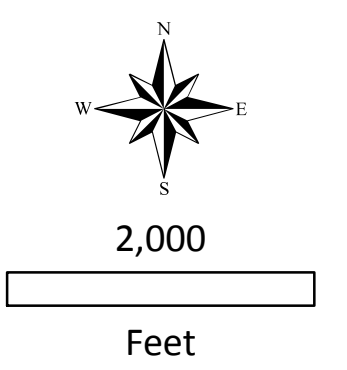
Notes:
Parcel Data provided by the City of Auburn.
Soils data from NRCS (<https://websoilsurvey.sc.egov.usda.gov>)

Map printed:
January 2018



- Tax Parcels**
- Tax Parcels
- Zoning**
- AG - Agriculture and Resource Protection
 - GB - General Business
 - ID - Industrial
 - LDCR - Low Density Country Residential
 - NB - Neighborhood Business
 - RR - Rural Residential
 - SR - Suburban Residential

**Zoning Map
City of Auburn
North Section**



Notes:
Parcel Data provided by the City of Auburn.
Soils data from NRCS (<https://websoilsurvey.sc.egov.usda.gov>)

Map printed:
January 2018